



3.ERANSKINA / ANEXO III

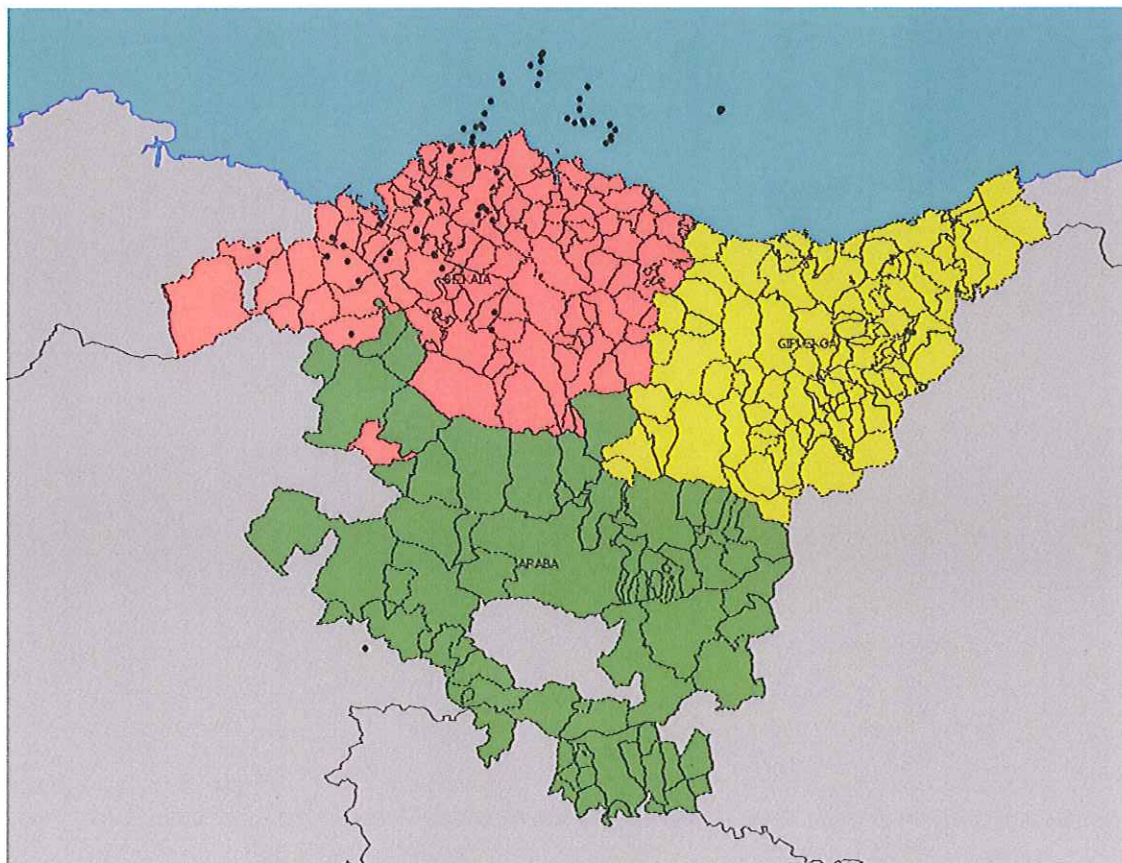
2011ko AZAROAREN 4tik – 6ra – TXIMISTEI BURUZKO TXOSTEN BEREZIA INFORME ESPECIAL DE RAYOS 4 – 6 NOVIEMBRE 2011

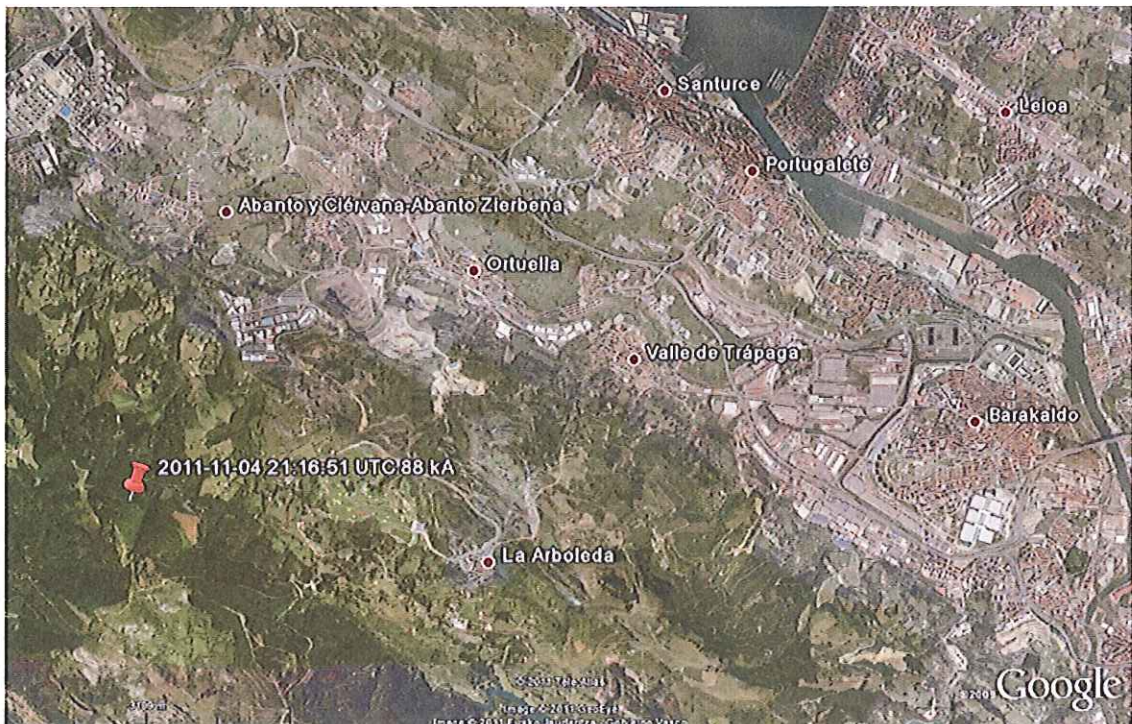
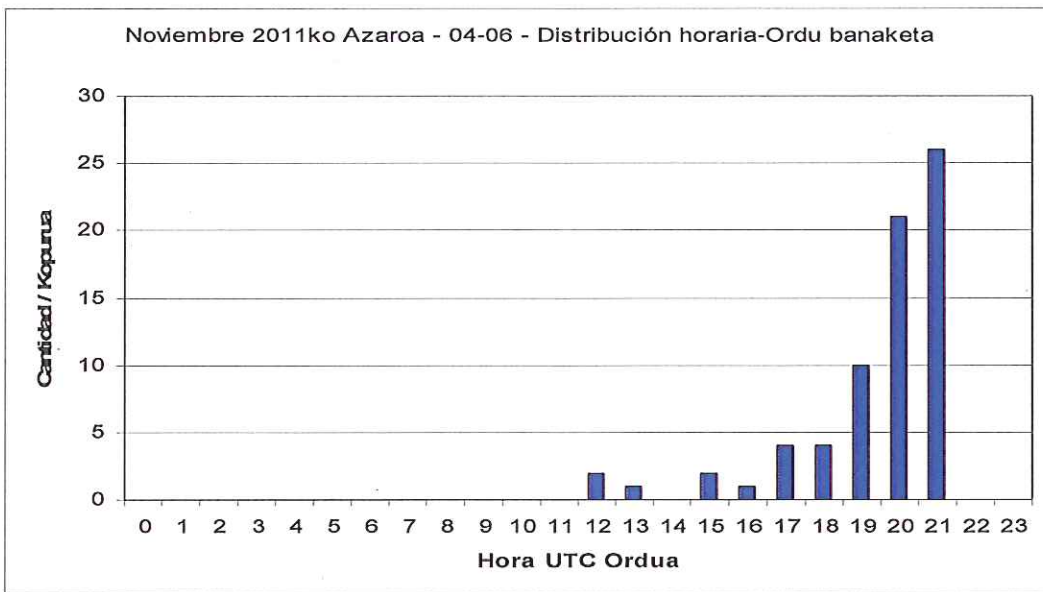
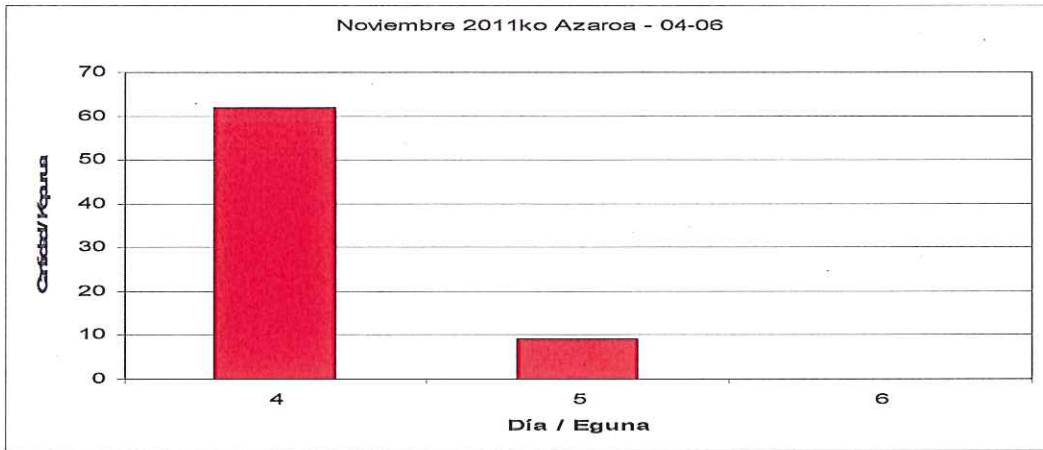
Entre el 4 y el 6 de noviembre de 2011, la red de detección de rayos de Euskalmet ha medido 71 rayos. La mayoría se han producido a últimas horas del día 4, afectando principalmente al territorio de Bizkaia.

El rayo positivo más intenso (88 kA) se ha detectado cerca de La Arboleda, y el negativo más intenso (-61 kA) se ha medido en el mar frente a Bakio. Los dos rayos son del día 4 de noviembre.

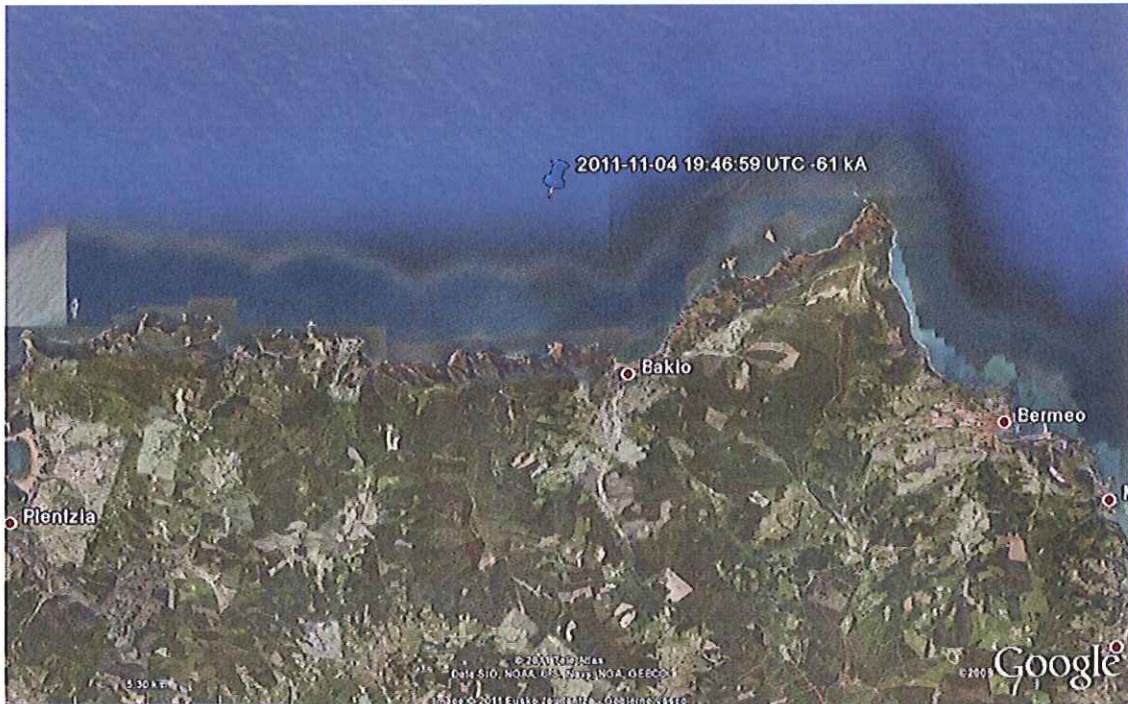
2011ko azaroaren 4tik 6ra, Euskalmeten tximistak detektatzeko sareak 71 tximista neurtu ditu. Gehienak azaroaren 4an gertatu dira, azken orduetan eta nagusiki Bizkaian.

Tximista positiborik handiena (88 kA) La Arboleda ondoan antzeman da, eta negatiborik handiena (-61 kA) itsasoan neurtu da, Bakio aurrean. Bi tximista hauek azaroaren 4an gertatu dira.





[Handwritten signature]



TXIMISTEN KOKAPENA / LOCALIZACIÓN DE LOS RAYOS

Data/Fecha	Ordua UTC Hora	LAT	LON	Korrontea/ Corriente (kA)
04/11/2011	16:36:55.982	434.605	-257.947	-8
04/11/2011	18:26:23.092	431.631	-199.442	-21
04/11/2011	18:27:50.753	431.668	-20.062	-8
04/11/2011	18:27:50.777	431.633	-19.994	-10
04/11/2011	18:51:24.959	432.845	-32.647	-3
04/11/2011	19:00:25.870	433.956	-2.801	-9
04/11/2011	19:01:45.094	427.226	-30.549	-3
04/11/2011	19:01:45.098	431.714	-28.103	43
04/11/2011	19:24:06.548	433.441	-283.218	-9
04/11/2011	19:24:06.563	43.342	-282.122	-6
04/11/2011	19:28:20.379	433.337	-283.623	-8
04/11/2011	19:30:46.555	433.456	-28.287	-10
04/11/2011	19:43:53.669	434.772	-282.403	-26
04/11/2011	19:46:59.233	43.458	-282.626	-61
04/11/2011	19:58:25.175	433.997	-283.668	-11
04/11/2011	20:14:24.957	435.604	-271.449	-8
04/11/2011	20:17:00.057	43.551	-271.381	-45
04/11/2011	20:17:00.070	435.624	-271.089	-10
04/11/2011	20:18:09.731	435.454	-273.391	-7
04/11/2011	20:18:09.868	435.172	-272.142	-8
04/11/2011	20:20:03.845	435.333	-271.562	-43
04/11/2011	20:40:52.095	434.444	-284.668	-7
04/11/2011	20:41:29.921	435.308	-279.174	17
04/11/2011	20:43:34.476	435.206	-278.912	-8
04/11/2011	20:44:54.446	434.955	-281.201	-10
04/11/2011	20:44:54.447	434.558	-286.345	-4
04/11/2011	20:44:54.737	434.259	-288.981	-10
04/11/2011	20:47:02.074	434.582	-284.002	-21
04/11/2011	20:48:54.218	434.322	-282.588	-34

[Handwritten signature]



HERRIZAINGO SAILA
Larrialdiei Aurre Egiteko eta
Meteorologiako Zuzendaritza

DEPARTAMENTO DE INTERIOR
Dirección de Atención de Emergencias
Y Meteorología

Data/Fecha	Ordua UTC Hora	LAT	LON	Korrontea/ Corriente (kA)
04/11/2011	20:48:54.232	434.364	-28.487	-18
04/11/2011	20:48:54.245	434.622	-28.305	-5
04/11/2011	20:49:22.916	434.665	-263.274	66
04/11/2011	20:49:22.977	434.627	-2.629	-21
04/11/2011	20:56:29.211	434.301	-288.576	-20
04/11/2011	20:56:29.239	434.018	-289.266	-36
04/11/2011	20:56:29.260	433.913	-289.131	-17
04/11/2011	21:02:34.663	434.394	-257.782	-13
04/11/2011	21:02:34.713	434.538	-257.065	-14
04/11/2011	21:02:34.820	435.144	-262.229	-6
04/11/2011	21:03:52.565	434.834	-263.974	-5
04/11/2011	21:04:59.123	434.968	-263.888	45
04/11/2011	21:05:21.526	432.793	-292.084	-5
04/11/2011	21:06:37.308	43.277	-312.954	75
04/11/2011	21:09:43.276	434.655	-261.293	-21
04/11/2011	21:09:43.562	434.644	-264.836	-9
04/11/2011	21:10:59.186	434.456	-257.878	-18
04/11/2011	21:13:35.053	434.346	-258.847	-22
04/11/2011	21:14:50.187	434.697	-26.625	39
04/11/2011	21:15:25.242	433.018	-311.986	-5
04/11/2011	21:16:51.147	432.905	-3.098	88
04/11/2011	21:20:21.950	432.417	-30.685	36
04/11/2011	21:38:31.248	432.805	-300.652	-57
04/11/2011	21:38:31.265	432.816	-300.608	-4
04/11/2011	21:38:31.282	432.716	-301.444	-4
04/11/2011	21:39:21.954	433.533	-295.641	-8
04/11/2011	21:39:21.979	433.515	-295.571	-3
04/11/2011	21:39:22.445	43.361	-295.213	-4
04/11/2011	21:41:29.623	433.531	-293.532	-8
04/11/2011	21:43:51.949	432.592	-290.585	63
04/11/2011	21:45:19.299	433.122	-295.601	-7
04/11/2011	21:45:19.462	43.313	-295.569	-5
04/11/2011	21:45:19.481	433.143	-295.534	-7
05/11/2011	12:54:04.031	43.269	-309.053	-21
05/11/2011	12:54:04.415	433.211	-302.532	16
05/11/2011	13:00:29.902	431.669	-308.136	-52
05/11/2011	15:35:18.089	433.277	-280.911	-3
05/11/2011	15:52:59.416	431.969	-280.538	-4
05/11/2011	17:47:22.020	434.814	-236.044	-12
05/11/2011	17:47:22.066	434.789	-236.395	-15
05/11/2011	17:47:22.124	434.787	-23.645	-7
05/11/2011	17:47:22.201	434.815	-236.427	-13